

FACTORY BUILT FIREPLACE, MODELS:

- **SUPREME**
 - **SUPREME TOW FACES**
 - **LASER**

Tested and certified to:

- **ULC-S610-M87**
- **UL-127**
- **CSA C22.2 no 3M-79**
- **CSA C22.2 no 113 M84**

by Inchcape Testing Services NA ltd (Warnock-Hersey)

OWNER'S MANUAL - INSTALLATION - OPERATION

Manufactured by:

**SUPREME FIREPLACES INC. , 3594 JARRY est, MONTREAL, QC., H1Z 2G4
TEL.: (514) 593-4722, FAX.: (514) 593-4422**

SUPREME LIFE WARRANTY

SUPREME FIREPLACES INC. warrants its factory-built fireplaces , models LASER, SUPREME and SUPREME TWO FACES against manufacturing defects, subject to the following conditions:

1. During the first two years of the Limited Warranty, SUPREME FIREPLACES INC. will provide replacement parts at no charge, except Glass, painted or plated parts and will also pay for reasonable labor costs for repair work.

2. During the third through the fifth year of the limited warranty, SUPREME FIREPLACES INC. will provide replacement parts at no charge, except Glass, painted or plated components and electric parts.

SUPREME FIREPLACES INC. shall not be responsible for any labor costs associated with such replacements.

3. During the sixth through life years of the Limited Warranty, SUPREME FIREPLACES INC. will provide replacement parts (if available) at 50% of the retail price, except for parts mentioned above.

SUPREME FIREPLACES INC. shall not be responsible for any labor costs associated with such replacements.

All parts or portions thereof requiring repair or replacement under this warranty must be returned to the factory along with proof of installation. All returns must be authorized by the manufacturer.

This warranty is conditional upon correct installation and intended use of our products and does not cover damages caused by misuse of the products.

INSTALLATION AND OPERATING INSTRUCTIONS

Note: The authority having jurisdiction (such as the municipal building department, the fire department, the fire prevention bureau, etc...) must be consulted before the beginning the installation, to determine the need to obtain a building permit.

CAUTION: Improper installation of this fireplace constitutes a fire hazard. Read and follow these instructions.

KEEP THESE INSTRUCTIONS FOR FUTURE USE

Note: *Do not install a fireplace insert inside the factory build fireplace, unless the insert has been tested and is SPECIFICALLY CERTIFIED for use in conjunction with this model.*

LOCATION OF THE FIREPLACE

Select the appropriate location for you fireplace; refer to Figure 1 for examples of typical installation locations. The position of the fireplace should be selected on the basis of heat output, safety and esthetics.

The cutting of joists and rafters for floor, ceiling and roof chimney penetrations will affect the load bearing capacities of the dwelling structure. Improper cutting of chimney openings in the attic and roof will affect the thermal insulating capacity and the weathertightness of the dwelling. Incorrect workmanship should be avoided

Consult a professional engineer or a certified installer as required.

The location of the fireplace should be selected, when possible, such as to minimize the number of offsets in the chimney course. Offsets will reduce draft, complicate the chimney sweep's work and increase installation costs.

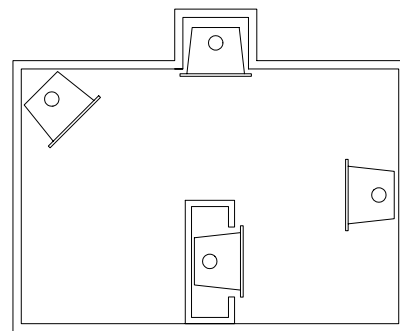


Figure 1

An installation drawing should be prepared prior to the installation work.

FIREPLACE INSTALLATION

The fireplace can be placed directly onto or against normal, combustible construction materials such as lumber, plywood, millboard, particle board, drywall and decorative wood paneling.

The fireplace should NOT be placed directly against, or be in contact with insulation material.

The hearth extension is to be fabricated or assembled from non-combustible materials only. Examples are steel, cement or mortar, stone, brick, ceramic tiles, asbestos board and glass. Unidentified materials may be combustibles; verify the product specifications prior to installation.

The framing around the face of the fireplace is constructed from nominal 2" x 4" construction lumber. The framing is to be nailed on to the floor and to the ceiling.

DO NOT NAIL OR SCREW FRAMING MEMBERS INTO THE FIREPLACE.

The minimum clearance to combustible materials is shown in Table 1.

- 3. Offset chimney, outside installation; Figure 7
- 4. Offset chimney, outside installation with cleanout Tee; Figure 8

The connection of the chimney to the fireplace is done by security screwing the first chimney section onto the fireplace connector. Three 1/2" metal screws spaced apart at 120° are then to be inserted to lock the joint in place.

NOTE: Follow chimney manufacture's instructions for correct chimney installation.

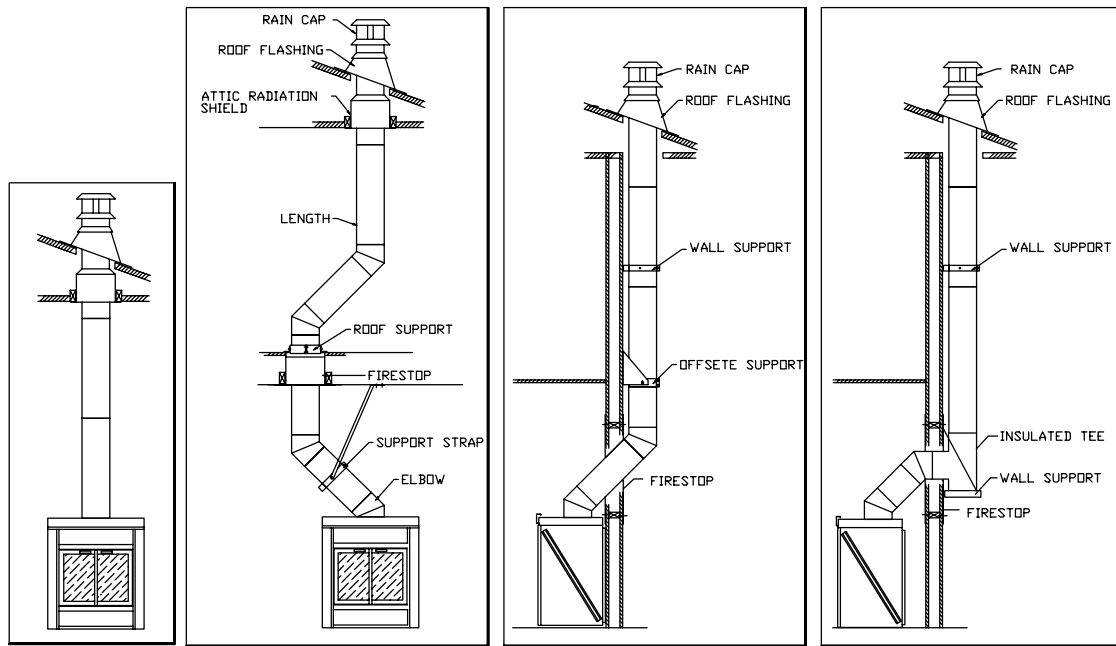


Figure 5

Figure 6

Figure 7

Figure 8

BLOWER KIT INSTALLATION

The blower kit is supplied as optional component, specifically for the use with SUPREME fireplaces. Do not install a substitute kit as this may result in overheating and risk of fire.

Install the blower kit as shown in Figure 9, and plug the power cord into a neighboring 115 Volts wall outlet. Figure 10 shows the electric diagram for the motor blower assembly.

Note: All the electric connections must be made by qualified electricians.

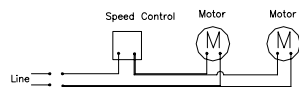
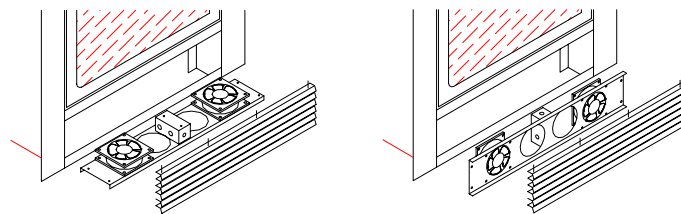


Figure 10



Supreme two Faces

Supreme and Laser

Figure 9

AUTOMATIC OUTSIDE AIR ACTIVATION

Note: The outside air installation is optional.

The fireplace is equipped with an outside air automatic valve which will open when the fireplace is hot and closes when the fireplace will cool down.

To activate the air valve simply remove the locking screw as indicated on the adjacent drawing.

The outside air valve is indented to bring fresh air into the circulating chamber of the fireplace in order to replace the oxygen consumed during the combustion.

General:

The outside air kit could be installed according to the following guidelines.

- The air duct must be in inside diameter insulated
- The length of the air duct should not exceed 10 feet.
- The fresh air must come from the outside and not from another room or the attic.
- The outside register must be away from automobile exhaust fumes, gas meters or other vents.
- Avoid to install the air register where it will be likely to be covered by snow or exposed to strong wind.
- The air register could be installed above or below the level where the fireplace is installed.
- Use a SUPREME FRESH AIR KIT or any other fresh air kit intended for fireplace use.

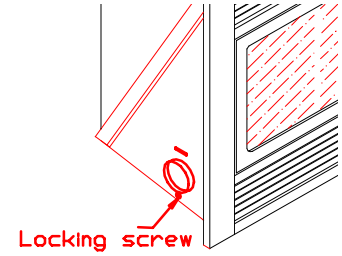


Figure 11

Installation:

- Make a 4 1/2 in hole in the outside wall at the chosen location.
- Install the air register.
- Remove the locking screw in order to activate the air valve.
- Install the air duct and secure with duct clamps.

GLASS DOORS

The glass door of your fireplace must be treated with care, do not slam the doors shut or build the fire to close too the glass. Do not overfire. Excessive temperatures or impacts may lead to breakage.

The glass panels of your fireplace are cut from heat-resistant ceramic type "ROBAX" glass, 5 mm (nominal) thick. The panels are factory-cut.

If your glass doors crack or break, replace the panel immediately. Do not use the fireplace with cracked or broken glass doors, overheating and a fire hazard will result.

To repair a broken glass door, follow the steps indicated below;

Use only ceramic glass with minimum thickness 5mm.

1. Order a pre-cut replacement panel from your dealer. Do not use substitute materials.
2. Remove the broken pieces from the door frame using pliers. Watch for cuts. Clean the frame carefully to insure that it is free of small fragments.
3. Insert the new panel into the door frame as shown in Figure 12
- 4.

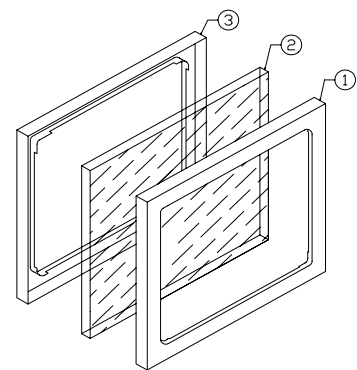


Figure 12

- 1 Exterior frame
- 2 Glass (ROBAX)
- 3 Interior frame

The glass door should be cleaned with a soft cloth, using a non-abrasive solution such as soap and water, if necessary. Abrasive cleaners will produce surface scratches, reduce panel transparency and resistance to impacts.

Commercial glass cleaners as KEL-KEM will produce better results.

The panels should be cleaned when the fireplace is not in use. Do not clean glass when it is hot.

OPERATING INSTRUCTIONS

CLEARANCE TO THE FRONT OF THE FIREPLACE.

The minimum distance between the front of the fireplace and any combustible materials, such as firewood, furniture, drapes, etc. is 54 in.

WOOD

The SUPREME fireplaces are designed to burn good quality dry cordwood. Optimum log length is 18 in. and preferably split in halves or quarters. Excessive moisture content in firewood causes excessive creosote deposits in the chimney, which could lead to a chimney fire. Cordwood should be split and left to dry for 1 year prior to use.

Use only good quality dry cordwood. DO NOT burn coal, construction lumber, plastics, garbage or other foreign materials in your space heater.

Never use gasoline, gasoline type lantern fuel, kerosene, charcoal, lighter fluid, or similar fluids to start or «freshen up» a fire in this fireplace.

Keep all such liquids well away from the fireplace while it is in use.

CREOSOTE FORMATION AND THE NEED FOR REMOVAL

When wood is burned slowly, it produces tar and other organic vapors which combine with expelled moisture to form creosote. The creosote vapors condense in the relatively cool chimney flue of a slow burning fire. As a result, creosote residue accumulates on the flue lining. When ignited, this creosote makes an extremely hot fire.

The chimney should be inspected periodically during the heating season to determine if creosote build-up has occurred. If a significant layer of creosote has accumulated (1/8" or more) it should be removed to reduce the risk of chimney fire.

DISPOSAL OF ASHES

Ashes must be placed in a metal container with tight fitting lid, taken outside and placed on the ground, away from all combustible materials, pending final disposal. If the ashes are disposed of by burial in soil or otherwise locally dispensed, they should be retained in the closed container until all cinders have thoroughly cooled.

FRESH AIR

Adequate replacement air is necessary for proper fireplace operation. Air is required for combustion and to maintain the necessary draft. If the house is airtight, combustion equipment may not function properly. If the combustion equipment, which includes the fireplace, is starved of the air necessary to function, it will be necessary to provide a source of fresh air into the dwelling. This may be done using air exchanger units or simply by opening a window slightly.

BUILDING THE FIRE

Build the fire directly onto the hearth or use grates to raise the fire.

Roll up newspaper sheets and place them on the hearth to form a suitable ignition layer. Add kindling or thin sections of split cordwood (3/4" or less) over the newspaper, to form a second layer.

Add 2 or 3 larger pieces of wood over the second layer, to form the final layer.

Turn the damper control to open position.

Light the fire and close the doors.

Note: The wood should be placed against the back of the combustion chamber, away from the glass doors, to avoid damage to the doors.

WARNING: Do not overfire the unit, as this will result in overheats, may damage the fireplace or/and result in fire hazard. The maximum firewood load must not exceed 4 medium size logs (about 30 pounds).

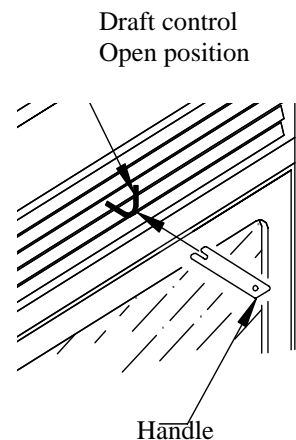


Figure 13

Add wood as required, to maintain the desired heat output. After the fire is established, the burning rate may be controlled by either opening or closing the draft control. Opening the draft control will cause the fire to burn more rapidly. Closing the draft control will cause the fire to burn more slowly.

Figure 13 shows the draft control at the open position.

Caution:
The draft control is hot when the fireplace is on. Always use the supplied handle to open and close it.

HOT AIR DUCTS

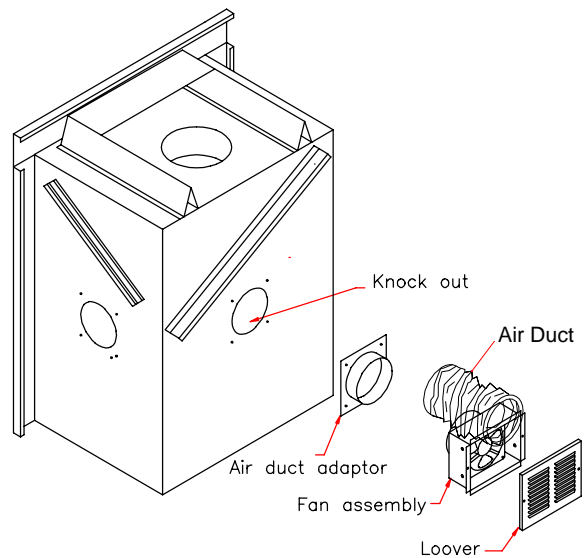
The hot air duct is an optional kit consisting of the followings:

- Fireplace adapter
- Fan assembly
- Wall thermostat

Also it is required but not supplied a standard hot air duct, flexible insulated approved for temperature not less than 210 °F.

The duct length must be between 3 and 30 feet.

It is possible to install up to three air ducts on the models SUPREME and LASER, and up to two air ducts for the model SUPREME TWO FACE.



INSTALLATION

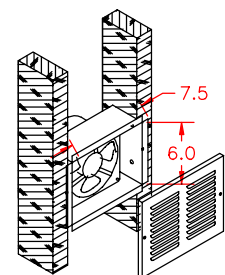
The air duct system is intended to bring hot air to remote area of the same room or to rooms other than the room where the fireplace is installed.

To install air ducts:

- Remove the knock out from the side of the fireplace.
- Install the air duct adapter on the side of the fireplace. Secure with the four screws.
- Choose the desired room to bring the hot air. Cut an opening 6 x 7.5 in.
- Install the air duct. Secure the air duct on the fireplace and at the fan kit with hose clamps.
- Secure the fan kit with screws in the desired location.

Caution :Remove only knock outs where air duct will be installed. Removing a knock without installing an air duct could compromise the safety of your fireplace.

Note: The electric connections must be made by a qualified electrician



Fan assembly installation

